

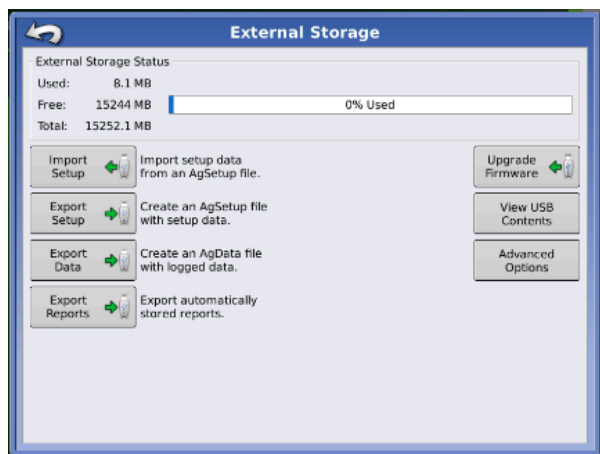
How to Export Your Acreage/Production Data

Crop insurance reporting data includes important field details such as acreage, planting dates, and crops. You can extract this data and import it into **MyAgData** for analysis and reporting.



How Do I Start?

1. Locate the **Export Data** tab on the controller.



2. Once clicking on the Export data tab wait for a little time.

3. After the file is export you will see a dialog on the screen showing the file exported. Depending on the monitor it will be a (.agdata, .yld, .ilf).



4. After the file is saved to the card or stick remove from the monitor and take to your computer.
5. When uploading the file from the stick make sure it is zipped at the proper folder level.

[2012-10-18_08-11-43.agdata](#)

[2012-10-18_08-11-43.zip](#)

6. Once zipped at the correct level, it is ready to be uploaded to MyAgData and the process will be finished.